

PAPER MODELS: THE CHRISTMAS KIT

PAPER MODELS™:

# The Christmas Kit™

*Decorator's Guide*



Sleigh bells and jingle bells. Candy canes and candy apples. Shimmering stars and crystalline snowflakes. Santas, toy soldiers, a holiday train, and a Dickens village. They're all part of the wonderful season of Christmas. And they're all just waiting for you to design, decorate, and assemble. In *Paper Models: The Christmas Kit*.

For the Macintosh™ computer

1  
ACTIVISION  
CREATIVITY SOFTWARE®

## *PAPER MODELS: THE CHRISTMAS KIT*

*Paper Models: The Christmas Kit* was designed by Carol Manley, Manley & Associates.

Program design by Ivan Manley, Manley & Associates.

Produced by Sam Nelson.

Graphics by Carol Manley.

Special thanks to Dana Pierce, Andy Vadjinia, Tim Cole, and Dan Rines.

*Decorator's Guide* by Paula Polley.  
Editorial management by Steven Young.

## LET'S GET TO KNOW EACH OTHER

We're working hard to design the kind of computer software you want, and we'd love to hear your comments. So drop us a note. For a recorded message about our newest software, call 800-633-4263 any time. If you have questions about using one of our products, call Consumer Relations between 9:30 a.m. and 5:00 p.m. Pacific time, Monday through Friday:

(in California)	415-940-6044/5
(from outside California)	800-227-9759

Write to:

Consumer Relations  
Activision, Inc.  
P.O. Box 7287  
Mountain View, CA 94039

## *PAPER MODELS: THE CHRISTMAS KIT*

### **Copying Prohibited**

This software product is copyrighted and all rights are reserved by Activision, Inc. The distribution and sale of this product are intended for the use of the original purchaser only and for use only on the computer system specified. Copying, duplicating, selling or otherwise distributing this product without the express written permission of Activision are violations of U.S. Copyright Law and are hereby expressly forbidden.

---

© 1986 Activision, Inc. All rights reserved.

Macintosh and MacPaint are trademarks of Apple Computer, Inc.

FULLPAINT is a trademark of Ann Arbor Softworks, Inc.

# Contents

A Whole New Way to Celebrate Christmas.....	1
What's in the Box.....	2
What's on the Disk.....	2
Getting Ready .....	7
Using MacPaint or FULLPAINT.....	8
Creating Your Own Christmas Decorations.....	9
Hints and Tips for Christmas Decorating.....	20



# A Whole New Way to Celebrate Christmas

You've always been able to use your computer to work on your work, organize the unorganized, and entertain yourself. But now, for the first time ever, Activision gives you a way to use your computer to celebrate everyone's favorite holiday: Christmas.

With *Paper Models: The Christmas Kit*, you can design and create all kinds of enchanting Christmas decorations, tree and package ornaments -- even an entire Christmas village. It's like having Santa's workshop right in your own home.

Creating your own Christmas decorations is as easy as it is fun. And as fun as it is rewarding. You'll simply use your computer and *The Christmas Kit* to design and print your holiday creations. Then decorate them with festive holiday colors and put them together with scissors and glue.

It's a wonderful way to have fun. To be creative. To decorate for the holidays. Or to say "Merry Christmas" to your family and friends. Christmas after Christmas.

## What's in the Box

*Paper Models: The Christmas Kit* comes with almost everything you need to create your own Christmas decorations, tree ornaments, gift wrap decorations, and gift packs.

Here's what you'll find in the box:

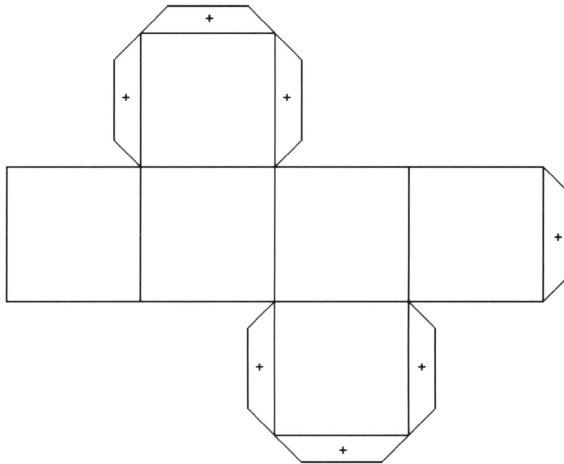
- The Christmas Kit* disk
- Decorator's Guide*
- Quick and Easy Reference Card
- Heavy card stock
- One glue stick
- Red and green felt-tip pens
- One 6-inch ruler
- 5 jingle bells

All you'll need is your computer system, MacPaint™ or FULLPAINT™ program, printer and paper, an extra work disk for saving your Christmas creations, and a pair of scissors.

## What's on the Disk

Your *Paper Models: The Christmas Kit* disk is filled with all kinds of holiday decoration patterns. Each pattern shows you exactly where to cut, fold, and glue the decoration to make it turn out just right.

## *PAPER MODELS: THE CHRISTMAS KIT*

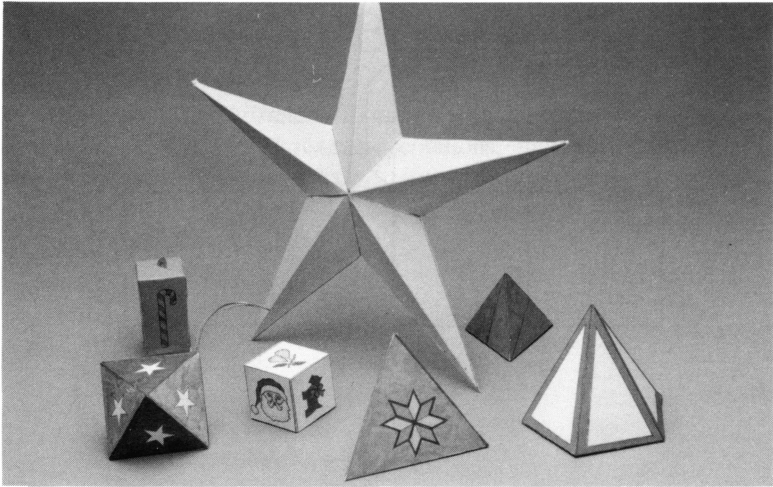


**Small Box Pattern**

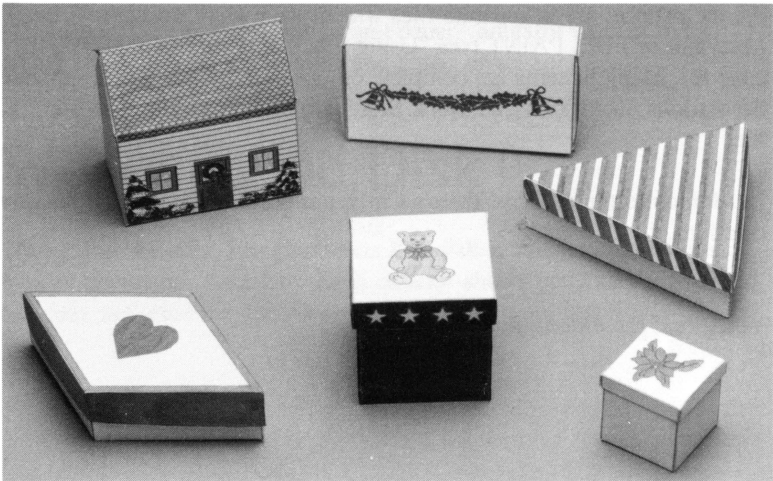
All the patterns are in separate files which you'll work on with MacPaint or FULLPAINT (see "Using MacPaint or FULLPAINT", page 8.) Many patterns are complete on one page. Other more intricate decorations, like Pickwick's Book Store, are found in more than one file.

In addition to the patterns, there's Christmas art to decorate your holiday creations.

You'll find these decoration patterns:

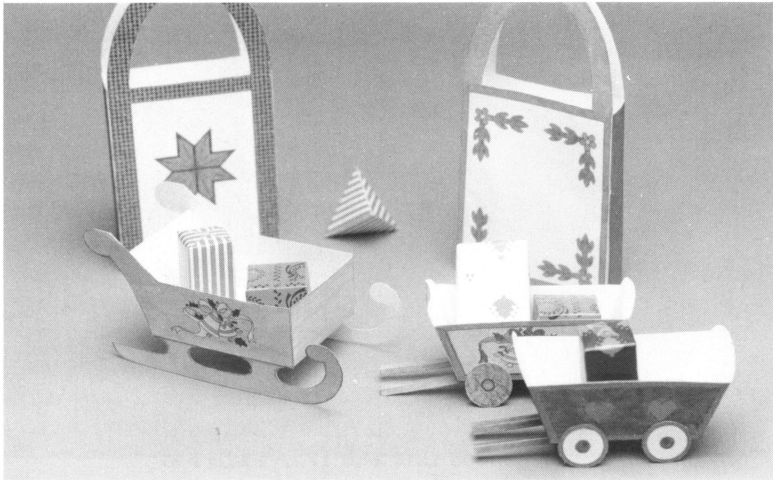


**Tree Ornaments**

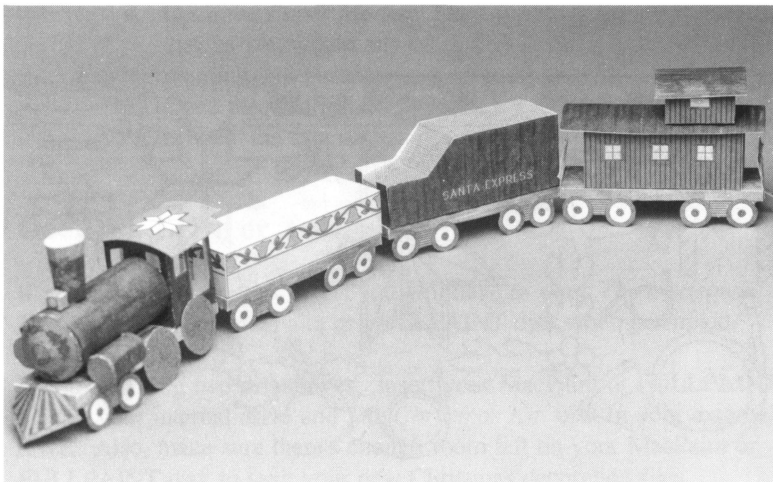


**Gift Boxes**

*PAPER MODELS: THE CHRISTMAS KIT*

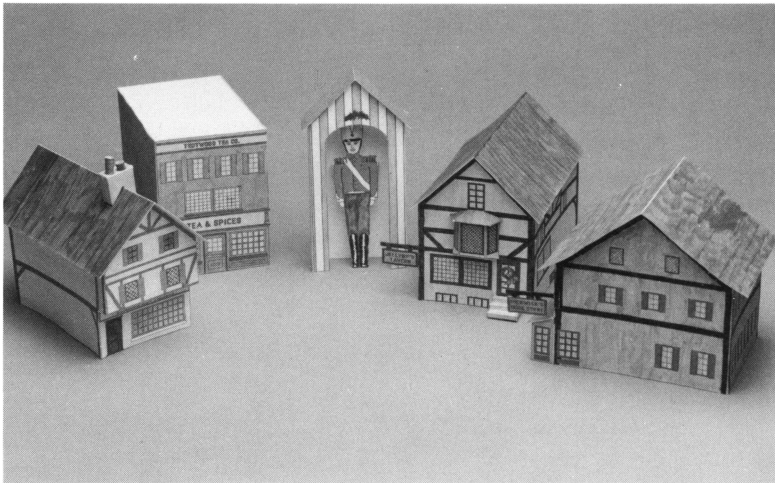


**Gift Holders**

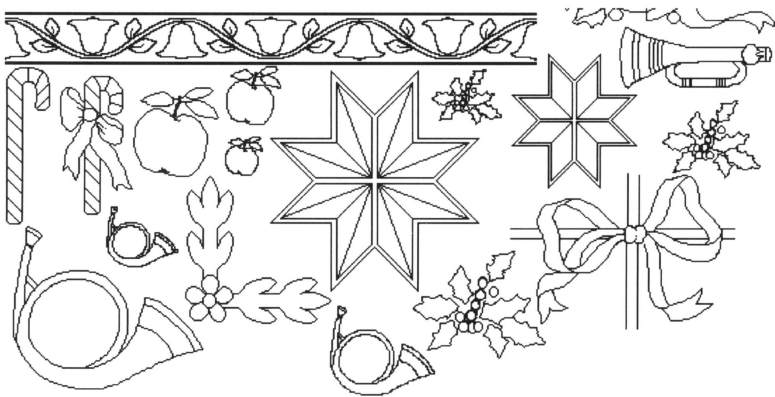


**Holiday Train**

*PAPER MODELS: THE CHRISTMAS KIT*



**Dickens Village**



**Christmas Art Sample**

## Getting Ready

Now that you've had an overview of what you'll find on your *Paper Models: The Christmas Kit* disk, you're ready to load it into your computer so you can see it all for yourself.

### Loading the Macintosh

1. Turn on your Macintosh.
2. Insert your MacPaint or FULLPAINT disk in your disk drive, label side up. If you have only one disk drive, eject your MacPaint or FULLPAINT disk after booting it.
3. Insert the *Paper Models: The Christmas Kit* disk in your one disk drive or in your second disk drive if you have two.
4. Open the *Paper Models: The Christmas Kit* disk as you would any other disk -- by pointing and clicking.
5. Open the © 1986 Activision, Inc folder to view the title screen.

### One Disk Drive or Two?

If you are using one disk drive, you will have to swap *The Christmas Kit* disk with your MacPaint or FULLPAINT disk when prompted.

If you are using two disk drives, insert your MacPaint or FULLPAINT disk in your internal drive and *The Christmas Kit* disk in your external drive. Also, make sure there's enough room left on your MacPaint or FULLPAINT disk to save your new Christmas decoration files.

# Using MacPaint or FULLPAINT

Your *Paper Models: The Christmas Kit* program works directly with MacPaint or FULLPAINT. Which makes it easy for you to design, modify, and print out your Christmas decorations.

If you use FULLPAINT instead of MacPaint, you should be able to use all the commands and functions similar to the MacPaint features mentioned in this guide.

Use MacPaint the way you normally would, pulling down menus and selecting commands by pointing and clicking. If you forget exactly how to use a particular command, please consult your MacPaint manual or click on the **Introduction** command in the **Goodies** menu.

With MacPaint you'll **Open** files and work with the pattern and art files in *The Christmas Kit* program. You can, of course, **Save** your work and **Print** it out.

You can **Draw** your own additions to each decoration, **Erase** mistakes, **Fill** in areas, even do detailed designs and touch-ups with the **FatBits** command.

You'll use MacPaint's **Copy** and **Paste** commands for picking up and putting down things like Santas, stars, even your own drawings. And use the **Text** feature for creating holiday greetings, labels, and signs.

You'll also be able to use other commands like **Flip Horizontal**, **Flip Vertical** and **Rotate**, as well as **Brush Mirrors** and **Edit Pattern**. In fact, anything you can do with your MacPaint program, you can do with your *Paper Models: The Christmas Kit* program.



# Creating Your Own Christmas Decorations

Now that you have an understanding of what's in *The Christmas Kit* files and how it can be used with MacPaint or FULLPAINT, you're ready to build your own Christmas decorations.

The step-by-step instructions in the following section show you how to create your first Christmas decoration: the **CUBE** ornament.

As you run through the steps, the commands you need to use are shown in bold type, so that you'll know when you need to access the MacPaint or FULLPAINT menus. If you forget exactly how to use one of these commands, please go back and review your Macpaint or FULLPAINT manual.

Once you understand how to create *one* decoration, you'll be able to create *any* of them. But a few decorations are a bit more complicated than the rest, so you'll also find a few pictorial instructions in the following pages.

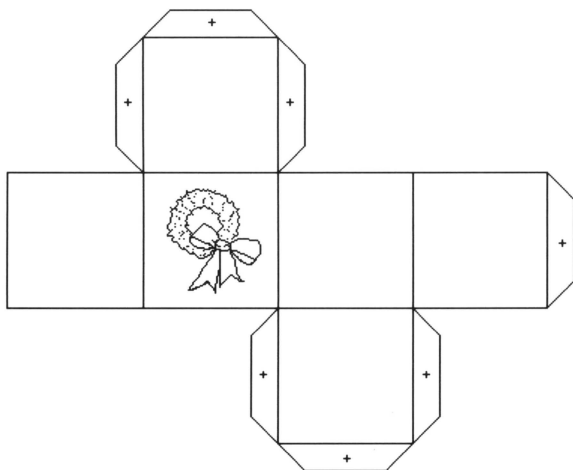
# Eleven Easy Steps to a Perfect Ornament

## 1. Pick Out the Shape

**Open** the **Ornaments 1** file and drag the **CUBE** to the center of the screen. Then use the **Save As ...** command (or equivalent **FULLPAINT** command) to save this file on your paint program disk or work disk. Then **Close** the file.

## 2. Pick Out the Art

**Open** the **Christmas Art** file. Use the **lasso** and the **Copy** command to select the wreath or any other piece of art you want to put on your ornament. Then **Close** the file.

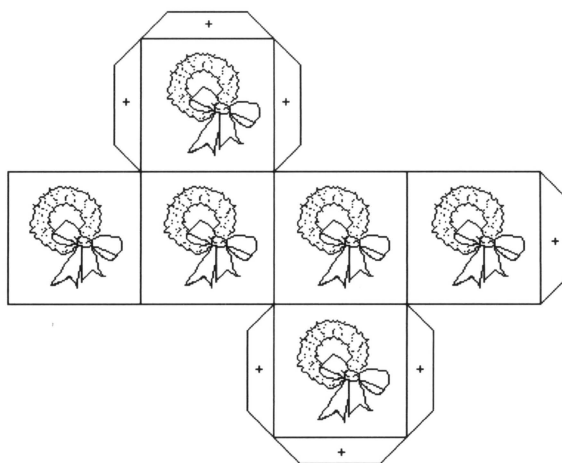


## *PAPER MODELS: THE CHRISTMAS KIT*

### **3. Place the Art**

Open the **Ornaments 1** file from your paint program or work disk.  
Using the **Paste** command, position your wreath on the ornament.

To add more wreaths on the other sides of the box, continue "pasting" each new wreath on the desired spot.



### **4. Print**

Just click on your MacPaint **Print** command.

### **5. Color**

Use the colored pens provided in this package -- or use any type of decorating process you like -- to add color to your ornament. (For more on decorating, see "Hints and Tips for Christmas Decorating," page 20.)

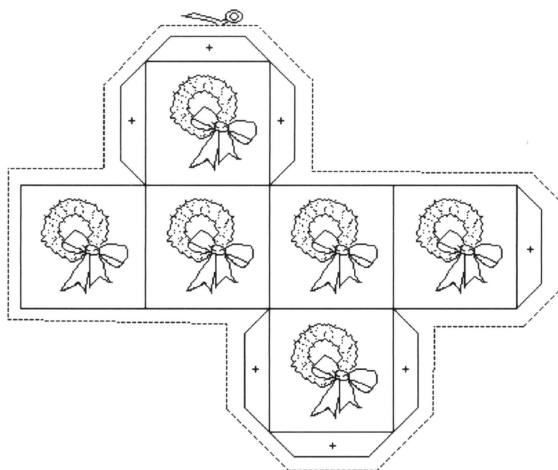
## PAPER MODELS: THE CHRISTMAS KIT

### 6. Paste to Card Stock

To make sure your decoration holds up -- Christmas after Christmas-- it's important to paste it to the heavy card stock provided in the box . Or use any stiff but flexible paper product, like old file folders or light box board.

For best results:

- Loosely cut out the decoration as shown.



- With the glue stick provided in *The Christmas Kit* box, apply glue to the back of the loosely cut decoration and paste it onto the card stock.

**NOTE:** It's best to glue the decoration right up to the far corners of the card stock. That way, you'll conserve as much of the stock as possible for future decorations.

## *PAPER MODELS: THE CHRISTMAS KIT*

### **7. The Final Cut**

Once the glue has dried, carefully cut only along the perimeter of the reinforced decoration.

**NOTE:** There are a few patterns in which you'll actually have to make a cut *beyond* the perimeter. Those cuts are indicated with a double thick line. (See "Additional Assembly Tips," page 19.)

### **8. Score**

To make every fold as crisp and clean as possible, you should *score* every fold *before* you bend it.

To *score* a fold, perfectly align the ruler supplied in *The Christmas Kit* box next to the fold line you wish to *score*.

Then, with a sharp pointed object, "draw over" the fold line. Good scoring tools include dried up ballpoint pens, paring knives, or nail files.

**NOTE:** Make sure you score *every* fold line.

### **9. Fold**

Once you've scored every fold line, carefully bend each one to begin to form the shape of the decoration.

### **10. Glue Tabs**

Apply a liberal coat of glue to each tab, making sure you avoid getting glue on the outside of the decoration.

## *PAPER MODELS: THE CHRISTMAS KIT*

You can tell the tabs apart by the + mark on each one.

Once each tab has a coat of glue on it, carefully assemble and glue together the ornament.

### **11. Touch-Ups and Additions**

You've just completed your first Christmas decoration. But it's not too late to make last minute touch-ups and additions. You can still add more color in spots. Or glue on a ribbon, hanging string, or jingle bells. (For more ideas, see "Hints and Tips For Christmas Decorating," page 20.)

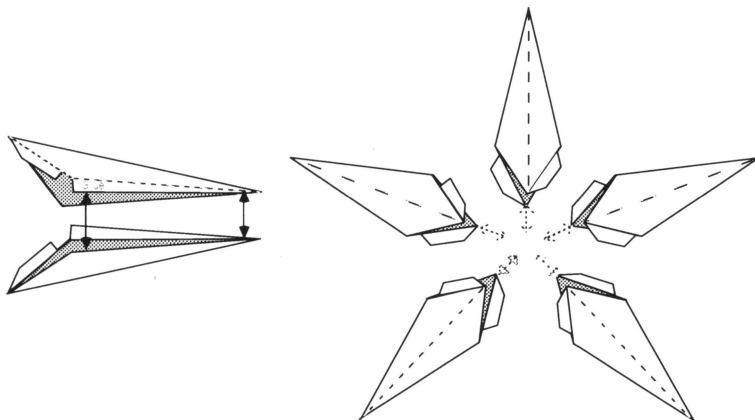
Most of the decorations in the *The Christmas Kit* need little or no explanation to assemble. For the few that are a bit more complicated, here are some cut-away illustrations to help you see how they go together.

## Assembling the STAR

Remember to print out five pairs of STAR points. You should then have ten STAR pieces in all.

To save time and paper, **Copy** several STAR points into a new file, then **Print**.

Here's how it all goes together:

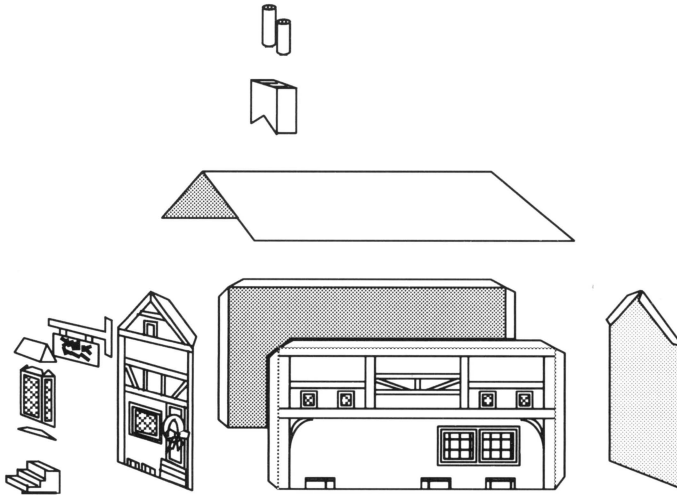


### Star Assembly

It's a good idea to put together all five STAR points *first*, then join them in the center. When you get to joining the *last* STAR point, make sure every tab has sufficient glue on it before joining it to the center.

## Assembling Pyke's Tavern

You'll find the pieces for Pyke's Tavern in two separate files. It's easy to put together -- especially when you use this illustration as a guide.



### Pyke's Tavern Assembly

- Cut out pot holes in top of chimney.
- *Don't* affix Chimney Pot to card stock.
- Remember to cut along the double thick black line.

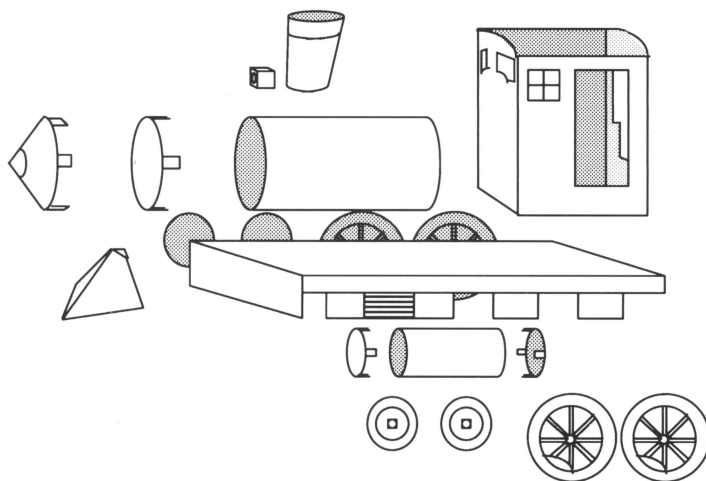


## Assembling the Locomotive

The locomotive is the most intricate decoration in *The Christmas Kit*. Which means it will take a little more time than the others. It would probably be a good idea to build the locomotive *after* you've had experience in building some of the simpler decorations.

The following pictorial instruction shows you how to build the engine. Building the other cars is very similar to building the engine.

**NOTE:** The wheels for all four cars are found in the **Train Pieces** file. The base for the grain car, coal car, and caboose are also found in the **Train Pieces** file.



Locomotive Assembly

1

## *PAPER MODELS: THE CHRISTMAS KIT*

- Wrap smokestack around gluestick for rounded shape.
- Cut out windows of cab before assembling.
- Make 2 pistons.
- Make 4 piston covers.
- Make 4 locomotive rear wheels.
- Make 4 wheels (just **Copy** wheels 4 times on the same page).

## Additional Assembly Tips

- Before mounting your decoration to the card stock, always spread glue evenly over the entire surface. Otherwise, you may get bubbles and lumps.
- Once the tabs have been glued and scored, you can remove the paper part of the tab and glue only on the card stock tab. This will give you a smoother, stronger, finished decoration.
- Certain patterns need to be cut *beyond* the perimeter. A double-thick black line will indicate the places that need to be cut in such a way. Remember to look carefully for these thick lines.
- When assembling **SCROOGE & MARLEY**, make *two* folds on the front piece, because the top floor overhangs the bottom floor. The black strip will be the part that's parallel to the ground. Look carefully at the sides to assess the final shape.
- The hanger in the **Ornaments 2** file can be used for any of the ornaments. To use it, though, you must first cut a slit in the top of the ornament.
- The chimney in the **Pyke's 2** file can be used for any of the Dickens buildings that have a peaked roof. Just **Copy** and **Paste** it onto the file you're printing out.
- To personalize a Dickens building, move or add windows and doors by using the **Copy** and **Paste** commands. Also, you can add pictures from the **Christmas Art** file to any of the buildings.

# Hints and Tips for Christmas Decorating

## Turn It Into a Tree Ornament

Any decoration in the *The Christmas Kit* can easily become a beautiful tree ornament. All it takes is a way to hang it.

Here are a few household items that can be used as ornament hangers.

- Heavy thread
- Light string
- Yarn
- Christmas wrapping string
- Christmas ribbon
- Paper clips (unfolded)
- Ornament hangers

**NOTE:** If you know ahead of time that you plan to use a decoration as a tree ornament, it's best to insert the hanging device *before* you glue everything together. That way, the hanging device will be anchored to the inside of the ornament -- so it will be sturdier and look better.

## Centerpieces, Art Objects, and More

The decorations in *The Christmas Kit* can be used in many ways other than as tree ornaments. Here are a few ideas. And you'll probably discover many more on your own.

- Centerpieces
- Place cards
- Gift wrap decorations
- Gift tags for presents
- 3-D greeting cards

## *PAPER MODELS: THE CHRISTMAS KIT*

- Small gift boxes
- Mantlepiece decorations
- Electric train villages
- Christmas scenes
- Window decorations
- Coffee table art objects
- Candy, cookie, or gift boxes  
(leave building roofs unglued)

### **More Ways to Add Color**

Although *The Christmas Kit* comes with red and green felt-tip pens, those aren't the only ways to color your ornaments. Here are some other coloring tools that are known to work well. But don't be afraid to experiment with others.

- Felt-tips markers in other colors
- Crayons
- Colored pencils or pens
- Acrylic paints (use *after* gluing to card stock)
- Pastels
- Pieces of colored paper, wrapping paper,  
or fabric glued onto decorations

### **More Ways to Decorate**

You're not limited to just using the pictures in the **Christmas Art** file as decorations. There are many other ways to add illustrations, designs, and decorative elements to your ornaments and gift boxes. Here are a few ideas to get you started. But the possibilities are endless.

- Draw your own Christmas art on your computer and **Copy** and **Paste** to the ornaments.
- Cut out pictures from old Christmas cards or magazines and paste them on your ornaments.

## PAPER MODELS: THE CHRISTMAS KIT

- Glue fabric and/or ribbons to ornaments, boxes, and other decorations.
- If your printer has friction feed capability, try running thin wrapping paper through it when you print out your decorations.
- Add bows of ribbon or yarn to gift boxes and ornaments.
- Glue glitter or sequins onto ornaments.
- Paste shiny paper or foil onto your ornaments or wrap them with a bow like presents.
- For a very pretty look, decorate with doilies or lace.
- When making the cubes and boxes, paste a different scene (from cards, wrapping paper, or magazines) on each side.
- Cut out the windows in the buildings, then place small Christmas lights inside them to make the buildings light up.

### Sharing the Spirit

It's probably already occurred to you that the finished products from *The Christmas Kit* will make great holiday gifts. But here are a few more ways to share the fun of this kit with your family and friends.

- **Have a decorating party.** Print out lots of *The Christmas Kit* files. Then invite your family and friends to assemble and decorate them together.

## *PAPER MODELS: THE CHRISTMAS KIT*

- **Class Christmas project.** Print out two or three files for everyone in the class so that they can all assemble and decorate their own ornaments. Then use them to trim the class Christmas tree.
- **Send decorations as Christmas cards.** Print out the file for a particular decoration and send it to someone so that they can have the fun of assembling and decorating their own ornament. You may want to include a couple of instructions. And make sure you send it early enough so that they have time to put it together *before* Christmas.

### **Make Your Own Gift Tags**

With *The Christmas Kit*, you can easily make your own holiday gift tags. Here's how:

On a blank screen, make a box or rectangle using the **Lines** command. Then **Copy** and **Paste** the art you want from the art files onto the rectangle. (Remember to accommodate for the fact that you'll be folding the rectangle in half to make your gift tag.) Finally, print, decorate, fold, and sign each tag.









## *PAPER MODELS: THE CHRISTMAS KIT*

### **ACTIVISION LIMITED 90-DAY WARRANTY**

Activision, Inc. warrants to the original consumer purchaser of this computer software product that the recording medium on which the software programs are recorded will be free from defects in material and workmanship for 90 days from the date of purchase. If the recording medium is found defective within 90 days of original purchase, Activision agrees to replace, free of charge, any product discovered to be defective within such period upon receipt at its Factory Service Center of the product, postage paid, with proof of date of purchase.

This warranty is limited to the recording medium containing the software program originally provided by Activision and is not applicable to normal wear and tear. This warranty shall not be applicable and shall be void if the defect has arisen through abuse, mistreatment, or neglect. Any implied warranties applicable to this product are limited to the 90-day period described above. If the recording medium should fail after the original 90-day warranty period has expired, you may return the software program to Activision, Inc. at the address noted below with a check or money order for \$7.50 (U.S. currency), which includes postage and handling, and Activision will mail a replacement to you. To receive a replacement, you should enclose the defective medium (including the original product label) in protective packaging accompanied by: (1) a \$7.50 check, (2) a brief statement describing the defect, and (3) your return address. EXCEPT AS SET FORTH ABOVE, THIS WARRANTY IS IN LIEU OF ALL OTHER WARRANTIES, WHETHER ORAL OR WRITTEN, EXPRESS OF IMPLIED, INCLUDING ANY WARRANTY OF MERCHANTABILITY OR FITNESS FOR A PARTICULAR PURPOSE, AND NO OTHER REPRESENTATION OR CLAIMS OF ANY NATURE SHALL BE BINDING ON OR OBLIGATE ACTIVISION. IN NO EVENT WILL ACTIVISION BE LIABLE FOR SPECIAL, INCIDENTAL, OR CONSEQUENTIAL DAMAGE RESULTING FROM POSSESSION, USE, OR MALFUNCTION OF THIS PRODUCT, INCLUDING DAMAGE TO PROPERTY AND, TO THE EXTENT PERMITTED BY LAW, DAMAGES FOR PERSONAL INJURY, EVEN IF ACTIVISION HAS BEEN ADVISED OF THE POSSIBILITY OF SUCH DAMAGES.

SOME STATES DO NOT ALLOW LIMITATIONS ON HOW LONG AN IMPLIED WARRANTY LASTS AND/OR THE EXCLUSION OR LIMITATION OF INCIDENTAL OR CONSEQUENTIAL DAMAGES, SO THE ABOVE LIMITATIONS AND/OR EXCLUSION OR LIMITATION OF LIABILITY MAY NOT APPLY TO YOU. THIS WARRANTY GIVES YOU SPECIFIC LEGAL RIGHTS, AND YOU MAY HAVE OTHER RIGHTS WHICH VARY FROM STATE TO STATE.

### **WARNING**

Any attempt to duplicate this product may damage it. Such damage is not covered by the warranty. Please see above for complete warranty. U.P.S. or registered mail is recommended for returns.  
Please send to:

#### **WARRANTY REPLACEMENTS**

**Consumer Relations  
Activision, Inc.  
2350 Bayshore Parkway  
Mountain View, CA 94043**

*PAPER MODELS: THE CHRISTMAS KIT*



© 1986, Activision, Inc. GS-149-03